

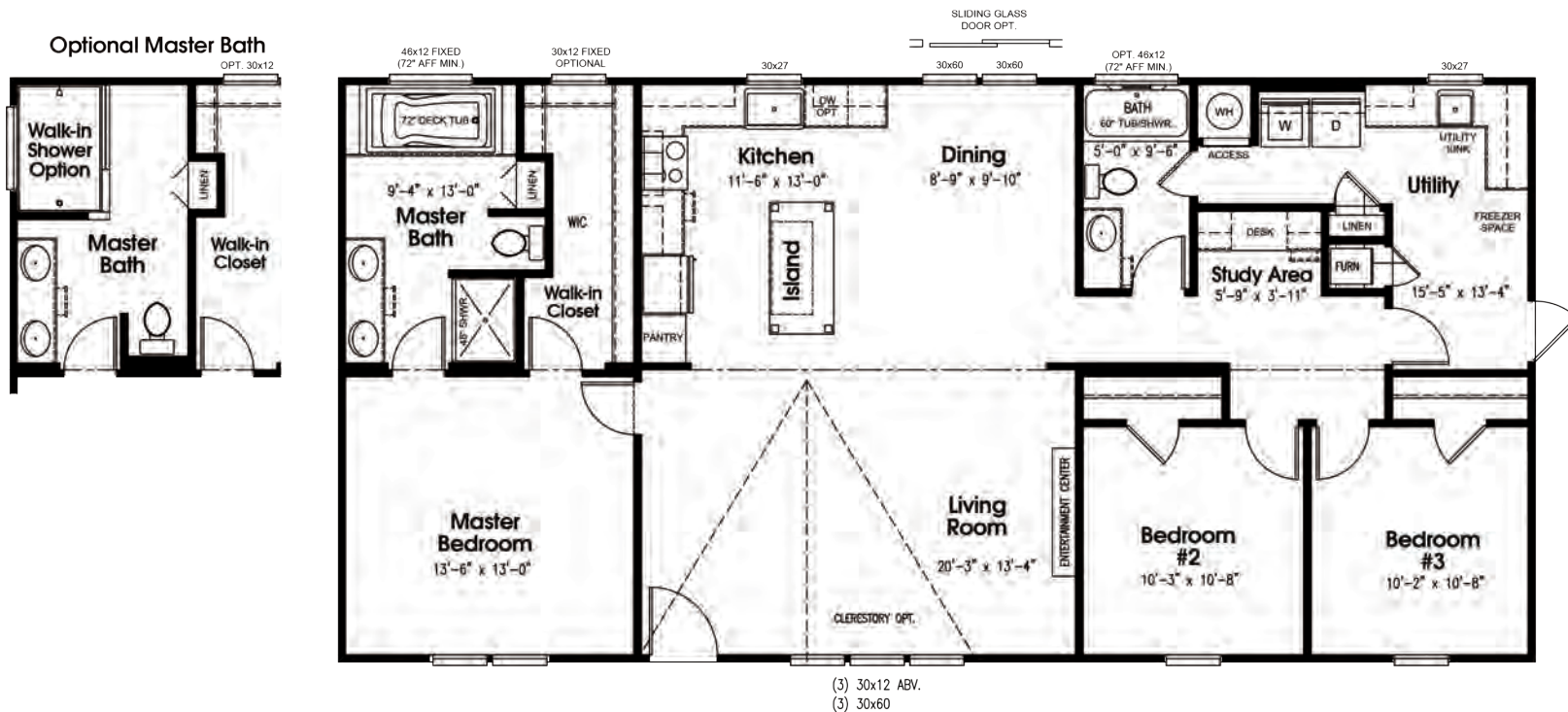
Model # NV-2803

Multi-Section

1530 Sq Feet

28' x 56'

3 Bedroom 2 Bath



Exterior Construction

Heavy Duty American Made I-Beam Chasis
Full-Length Outriggers
29 Gauge Industrial Metal Roof
Smart Panel Exterior
Double-hung Tilt-out Vinyl Thermal-pane Windows
38x80 Front Steel Door
36x80 Cottage Rear Door
Sherwin Williams Paint with Multiple Color Options
Exterior Eaves
Rear Exterior GFI Receptacle
Detachable Hitch

Interior Construction

2 x 4 Interior Walls 24" O.C.
2 x 4 Exterior Walls 16" O.C.
Insulation - R11 Floors/ R11 Walls / R28 Ceiling
8 ft Flat Textured Ceiling
Tape & Textured Walls
Ceiling Air Vents
Raised Panel, 3-Hinge Interior Doors
Solid Wood Cabinet Doors
Vinyl Flooring in Baths, Entryway, Kitchen, Dining, Living Room & Utility
Tongue and Groove OSB Floor Deck
Rebond Carpet Pad
Tack Strip & Carpet Bar
LED Lighting
Wire Shelving in All Closets
2" Blinds
Wood-backed Towel Bars & Tissue Holders
Walk-in Closets
16oz Vintage Beige Carpet in Master & Guest Bedroom

Plumbing & Electrical

200 AMP Service
A.C. Ready Furnace
40-Gallon Water Heater
Plumbed & Wired for Washer & Dryer
Plumbing Access Panels
Fiberglass Showers & Tubs
Ceramic Lavatories
Elongated Commodes
Vent Fan in Baths
Whole House Smoke Alarm System
Metal Faucets
6 ft Soaker Tub
Rocker Light Switches Throughout
Two-Bulb Bedroom Lights
Exterior Lighting
Heat Tape Outlet
Interior Main Water Shutoff Valve
Individual Water Shutoff Valves

Kitchen & Bath

Finished Overhead Cabinets with Center Shelves
Lined Base Cabinets
Stainless Steel Farmhouse Sink
Spring Gooseneck Faucet
Brush Nickel Faucets
Dishwasher
Standard Electric Range
18 Cu. Ft. Refrigerator
Vented Range Hood
Additional Options Available
• Optional Wine Cooler Refrigerator
• Optional Pot Filler Water Dispenser
• Optional 6' Kitchen Island w/ Butcher Block
• Optional 48" Electric Fireplace
• Optional Acrylic Tiled Shower Option
• Optional Ventahood Microwave Option
• Stainless Steel Option
• Optional Upgraded Insulation
• ADA Grab Bar Option
• Transom Window Option
• Awnings Option
• Clerestory Dormer Option
• Lino Throughout Option
• 2x4 Interior 16" O.C. Throughout Option
• Garbage Disposal Option & much more!

Copyright © 2016-2025 New Vision Manufacturing, LLC.

Floor plans, specifications, dimensions, standard features, and availability are subject to change without notice. Not all options may be available. Contact your local retailer for current availability and pricing. No warranties or guarantees, express or implied, are made regarding accuracy, completeness, or availability.